



North Spitsbergen Explorer - Versatile landscapes, sea ice & wildlife - Summer Solstice

The best opportunity to get active while spotting exotic Arctic wildlife!

Dates:
16 Jun - 23 Jun, 2025

Tripcode:
HDS03-25

Duration:
7 nights

Ship:
m/v Hondius

Embarkation:
Longyearbyen

Disembarkation:
Longyearbyen

Language:
German language assistance, English speaking voyage

Important:
Kayaking is an optional activity

ITINERARY

PLEASE NOTE:

All itineraries are for guidance only. Programs may vary depending on ice, weather, and wildlife conditions. Landings are subject to site availabilities, permissions, and environmental concerns per AECO regulations. Official sailing plans and landing slots are scheduled with AECO prior to the start of the season, but the expedition leader determines the final plan. Flexibility is paramount for expedition cruises. The average cruising speed of our vessel is 10.5 knots.

This expedition focuses on the versatility of north Spitsbergen's visually stunning landscapes, vast spans of sea ice, and many opportunities to spot whales, polar bears, seabirds, walruses, and other such wildlife. Enjoy the fantastically beautiful landscapes, adventurous landings, and shoreline hikes. For additional activities, check the tour description.

Solstice: -

The midnight sun is a phenomenon that occurs during the Arctic summer, when the sun is visible for a full 24 hours in fair weather. The summer solstice in Longyearbyen falls on 21 June, when the sun reaches its highest altitude of the year above the northern horizon at midnight. It will not be until late August that the sun fully goes down again, and then only for a few minutes. Join us in experiencing this fascinating phenomenon during our voyage through the Arctic wilderness of Svalbard.

Day 1: Largest town, biggest island

You touch down in Longyearbyen, the administrative center of Spitsbergen, the largest island of the Svalbard archipelago. Enjoy strolling around this former mining town, whose parish church and Svalbard Museum make for fascinating attractions. Though the countryside appears stark, more than a hundred species of plant have been recorded in it. In the early evening the ship sails out of Isfjorden, where you might spot the first minke whale of your voyage.

Day 2-7: North Spitsbergen's natural beauty, wildlife, and pack-ice

This voyage will take you into the pack ice and along the remote shorelines of rugged north Spitsbergen. Places we might visit include the following:

Raudfjord

On the north coast of Spitsbergen, you can enjoy this expansive fjord spilling with glaciers – and maybe even visited by ringed and bearded seals. The cliffs and shoreline also support thriving seabird colonies, rich vegetation, and the possibility of polar bears. We will try to land at Alicehamna or Buchananhavøya.

Monaco Glacier

Depending on the weather and sea ice, we could sail into Liefdefjorden, land at Texas Bar and cruise within sight of the 5-kilometer-long (3.1 miles) face of Monaco Glacier. The waters in front of this precipitous glacier are a favorite feeding spot for thousands of kittiwakes, and the base of the ice is a popular polar bear hunting ground. If ice conditions prevent us from sailing here early in the season, we may sail along the west coast of Spitsbergen.

Highlights of Hinlopen

We aim to sail into Hinlopen Strait, home to bearded seals, ringed seals, and polar bears. At the entrance, there is even the possibility to spot blue whales. After cruising among the ice floes of Lomfjord in the Zodiacs, you can view the bird cliffs of Alkefjellet, with their thousands of Brünnich's guillemots. On the east side of Hinlopen Strait, we may attempt a landing on Nordaustlandet. Here we may see reindeer, pink-footed geese, and walruses. We can take an alternate route if ice prevents entry into Hinlopen.

The Seven Islands

The northernmost point of the voyage may be north of Nordaustlandet at Chermisøya or Phippsøya, in the Seven Islands. Here we may reach 80° north, just 870 km (540 miles) from the geographic North Pole. Polar bears inhabit this region, so the ship may park for several hours among the pack ice before wheeling around west again.

Sailing the continental shelf

While retracing our route west, keep watch for polar bears and elusive Greenland (bowhead) whales. About 40 nautical miles west of Spitsbergen, we sail the edge of the continental shelf. Here fin whales forage during the summer in the upwelling zones (where cold,

nutrient-rich water wells up from below the sea's surface) that run along the Spitsbergen banks. At the mouth of Kongsfjorden, you have a good chance of sighting minke whales.

Forlandsundet, St. Johns Fjord, or Alkhornet

Walrus sometimes haul out in Forlandsundet at Sarstangen or Poolepynten. Alternatively, we might sail into St. Johns Fjord or south to the mouth of Isfjorden, landing at Alkhornet. Seabirds nest on these cliffs, Arctic foxes search below for fallen eggs and chicks, and reindeer graze the sparse vegetation.

Day 8: There and back again

Even great adventures must eventually come to an end. The vessel arrives back in Longyearbyen in the early morning, and bus transportation to the airport will be provided.

Included in this voyage

- *Voyage aboard the indicated vessel as indicated in the itinerary*
- *All meals throughout the voyage aboard the ship including snacks, coffee and tea.*
- *All shore excursions and activities throughout the voyage by Zodiac.*
- *Program of lectures by noted naturalists and leadership by experienced expedition staff.*
- *Free use of rubber boots and snowshoes.*
- *Transfers and baggage handling between the airport, hotels and ship only for those passengers on the group flights to and from Longyearbyen.*
- *All miscellaneous service taxes and port charges throughout the programme.*
- *AECO fees and governmental taxes.*
- *Comprehensive pre-departure material.*

Excluded from this voyage

- *Any airfare, whether on scheduled or charter flights*
- *Pre- and post- land arrangements.*
- *Passport and visa expenses.*
- *Government arrival and departure taxes.*
- *Meals ashore.*
- *Baggage, cancellation and personal insurance (which is strongly recommended).*
- *Excess baggage charges and all items of a personal nature such as laundry, bar, beverage charges and telecommunication charges.*
- *The customary gratuity at the end of the voyages for stewards and other service personnel aboard (guidelines will be provided).*

ACTIVITIES YOU CAN PARTICIPATE IN



Snowshoeing

FREE

Snowshoe walking is easy and does not require any technical skills. The snowshoes will fit all boot sizes and can be used in combination with Oceanwide's rubber boots



Kayaking

€430 8 places left

Basic kayaking experience is of advantage, but it is not a requirement. Physical fitness is essential. Kayaking is subject to weather and prevailing ice conditions.



Kayak Skills Progression Camp (expert, 1 seaters)

€430 9 places left

Kayak Skills Progression Camp

CABINS & PRICES



Quadruple Porthole

- Cabin size between 15,3 m² and 16 m²
- 2 portholes
- 2 upper & lower berths
- Small sofa
- Private shower & toilet
- Flatscreen TV
- Desk & chair
- Telephone and WiFi (supplemented)
- Hair dryer
- Cabinet
- Safe deposit box
- Wardrobe
- This cabin is suitable for families traveling with children, or passengers who do not require a twin or more luxurious cabin



Complete cabin

Price for the complete cabin, fully occupied.

€15600



Sharing berth

Share your cabin with others for the best price.

€3900



Triple Porthole

- Cabin size between 15,9 m² and 16 m²
- 2 portholes
- 1 upper berth & 2 lower berths
- Small sofa
- Private shower & toilet
- Flatscreen TV
- Desk & chair
- Telephone and WiFi (supplemented)
- Hair dryer
- Cabinet
- Safe deposit box
- Wardrobe
- This cabin is suitable for families traveling with children, or passengers who do not require a twin or more luxurious cabin



Complete cabin

Price for the complete cabin, fully occupied.

€14550



Sharing berth

Share your cabin with others for the best price.

€4850



Twin Porthole

- Cabin size between 13,3 m² and 16 m²
- 2 portholes
- 2 single beds
- Small sofa
- Private shower & toilet
- Flatscreen TV
- Desk & chair
- Telephone and WiFi (supplemented)
- Hair dryer
- Cabinet
- Safe deposit box
- Wardrobe
- Please note that all cabins will not necessarily have the same layout and surface area, nor will they be identical to the examples used in the photos



Complete cabin

Price for the complete cabin, fully occupied.

€10800



Single cabin

Price for the complete cabin occupied by 1 person (1.7x the shared rate).

€9180



Sharing berth

Share your cabin with others for the best price.

€5400



Twin Window

- Cabin size between 12,1 m² and 14,3 m²
- 1 window
- 2 single beds
- Small sofa
- Private shower & toilet
- Flatscreen TV
- Desk & chair
- Telephone and WiFi (supplemented)
- Hair dryer
- Cabinet
- Safe deposit box
- Wardrobe
- Please be aware that the view from some windows might be partially obstructed due to the design requirements of the ship
- Please note that all cabins will not necessarily have the same layout and surface area, nor will they be identical to the examples used in the photos



Complete cabin

Price for the complete cabin, fully occupied.

€11700



Single cabin

Price for the complete cabin occupied by 1 person (1.7x the shared rate).

€9945



Sharing berth

Share your cabin with others for the best price.

€5850



Twin Deluxe

- Cabin size between 19,4 m² and 21,3 m²
- 2 windows
- 2 single beds
- Sofa
- Private shower & toilet
- Flatscreen TV
- Desk & chair
- Telephone and WiFi (supplemented)
- Refrigerator
- Coffee & tea maker
- Bathrobe
- Hair dryer
- Cabinet
- Safe deposit box
- Wardrobe



Complete cabin

Price for the complete cabin, fully occupied.

€12400



Single cabin

Price for the complete cabin occupied by 1 person (1.7x the shared rate).

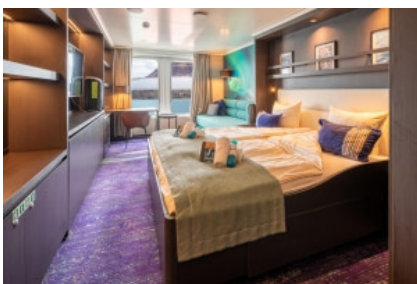
€10540



Sharing berth

Share your cabin with others for the best price.

€6200



Superior

- Cabin size between 20,7 m² and 21,3 m²
- 2 windows
- 1 double bed
- Sofa
- Private shower & toilet
- Flatscreen TV
- Desk & chair
- Telephone and WiFi (supplemented)
- Refrigerator
- Coffee & tea maker
- Bathrobe
- Hair dryer
- Cabinet
- Safe deposit box
- Wardrobe



Complete cabin

Price for the complete cabin, fully occupied.

€14100



Single cabin

Price for the complete cabin occupied by 1 person (1.7x the shared rate).

€11985



Junior Suite

- Cabin size between 19,2 m² and 20 m²
- 1 double window
- 1 double bed
- Private shower & toilet
- Flatscreen TV
- Desk & chair
- Telephone and WiFi (supplemented)
- Refrigerator
- Coffee & tea maker
- Bathrobe
- Hair dryer
- Cabinet
- Safe deposit box
- Wardrobe



Complete cabin

Price for the complete cabin, fully occupied.

€16100



Single cabin

Price for the complete cabin occupied by 1 person (1.7x the shared rate).

€13685



Grand Suite with private balcony

- Cabin size 26,7 m²
- 1 double window
- 1 double bed
- Sofa
- Private balcony
- Private shower & toilet
- Flatscreen TV
- Desk & chair
- Telephone and WiFi (supplemented)
- Refrigerator
- Coffee & tea maker
- Bathrobe
- Hair dryer
- Cabinet
- Safe deposit box
- Wardrobe



Complete cabin

Price for the complete cabin, fully occupied.

€17400



Single cabin

Price for the complete cabin occupied by 1 person (1.7x the shared rate).

€14790